

Your partner in  
**Bespoke  
Windows &  
Doors**

# Elemental.

**The unique Elemental hardware range offers a sleek and clean look, with a minimal design and straight-edged shapes.**

As the name implies, Elemental strives for simplicity— architect designed with the goal of eliminating frills and fuss; precision machined with high accuracy. Elemental hardware is made from extruded aluminium, and is available in a silver or black anodised finishes in 25 micron thickness.

# The Elemental Range



## Elemental Lever Door Handle

The Elemental Lever Door Handle is available in two sizes: Small and large. Snib or key operation is available for secure four-point locking.



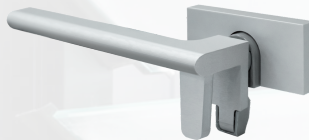
## Elemental Bi-Fold Handle

The Elemental bi-fold door handle consists of a sleek swivel lock that activates locking rods in the top and bottom of the door or window panel.



## Elemental Flush Pull

The Elemental flush pull is ideal for lighter sliding panels. The lock is mounted separately from the pull, and is operated by a key or snib.



## Elemental Venting Window Fastener

The Elemental Venting Window Fastener provides a venting option of the window fastener is available which allows the window to be fastened in a partially open position for passive ventilation.



## Elemental Escutcheon

The Elemental escutcheon provides a separate lock for use with the pull handle. It is available in turn snib or key options.



## Elemental Window Fastener

The Elemental window fastener closes against the window with no visible flap or wedge. Available in a low profile option.



## Elemental Pull Handle

The Elemental sliding door handle is available in two sizes: Large and small, but can be made to any length by special order. The pull handle is separate from the lock, which is operated by a key or snib.



## Elemental Espagnolette

The Elemental espagnolette offers single hand, two-point locking (no closing wedge) and robust operation. A secure venting position is also available.

**WINDOWMAKERS**  
THE DIFFERENCE IS CLEAR

79 Forge Road, Silverdale, Auckland  
Phone: 0800 89 49 89  
Email: [info@windowmakers.co.nz](mailto:info@windowmakers.co.nz)  
[www.windowmakers.co.nz](http://www.windowmakers.co.nz)